



## Bathing establishment Fact Sheet

Bathhouse name	Onda Blu
Address	Via Baldissera, 10
City	Marina di Cecina
Contacts	+39 328 4666618
Website	<a href="http://www.facebook.com/barbagni.ondablu">www.facebook.com/barbagni.ondablu</a>

**TESTED BY:** [Handy Superabile - Social Promotion Association](#) in summer 2023

**Please note** The following information refers to the verification date shown at the bottom of each card. **The Association** is not responsible for any significant changes made by the property after the visit.

### Summary

Bathing establishment Fact Sheet.....	1
Arrival at the facility .....	2
Private/public parking.....	2
Pathway from the parking lot to the main entrance .....	2
Reception.....	3
Bar/restaurant .....	4
Internal Pathways and common services.....	5
Internal Pathways.....	5
Toilet and shower accessible to guests with reduced mobility.....	5
Changing room.....	7
Beach.....	8
Children's play area.....	9
Swimming pool.....	9
Doctors' Offices/Healthcare Facilities.....	10


Project carried out with the contribution of the





**Arrival at the facility**

**Private/public parking**

Presence of private parking	NO
Public parking nearby	YES
Type of public car park	asphalt
	

**Pathway from the parking lot to the main entrance**

Pathway from the car park to the entrance	via 2 ramps: the first length 247 cm, width 154 cm, slope 1.6%; second length 126 cm, width 160 cm, gradient 7.3%
There are markers and tactile maps	NO
Usable door/entrance width	more than 90 cm





### Reception

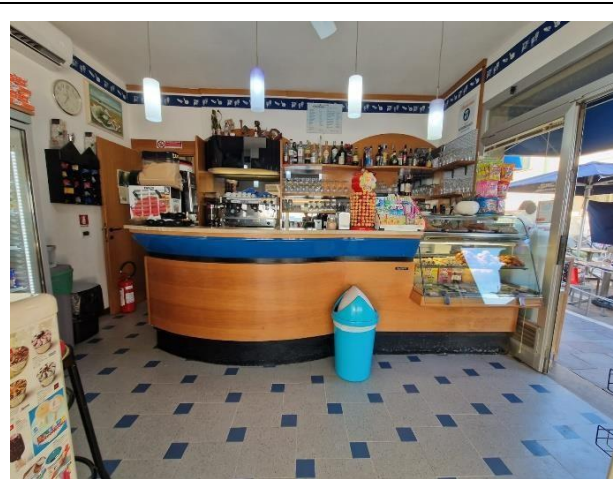
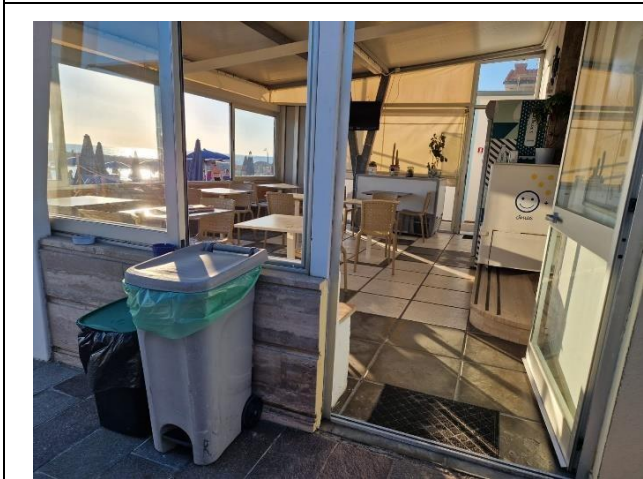
Umbrella booking system	<input checked="" type="checkbox"/> Via web <input checked="" type="checkbox"/> By phone <input checked="" type="checkbox"/> On-site
Presence of multilingual staff	YES
Presence of plant plan with key to services available	NO
Presence of visuo-tactile map	NO
Bulletin board/information panels at an average height of 130 cm in a well-lit area and font size at least 14 dpi with a contrast ratio greater than 4.5:1	NO
The staff attended training courses on welcoming people with different disabilities	YES





## Bar/restaurant

Type of venue	Snack bar
Access to the premises	Choose from 2 ramps: the first length 247 cm, width 154 cm, slope 1.6%; second length 126 cm, width 160 cm, slope 7.3% one element.
Usable door/entrance width	more than 90 cm
Bar counter	more than 100 cm
Types of tables	with central support
Space underneath the tables from the floor	more than 65 cm
Multilingual menu	YES
Menus with large print fonts	NO
Braille menu	NO
Table service for people with disabilities	YES
Availability of gluten-free food	<input type="checkbox"/> bread <input type="checkbox"/> pasta <input type="checkbox"/> biscuits <input checked="" type="checkbox"/> ice cream <input checked="" type="checkbox"/> Pre-packaged foods





## Internal Pathways and common services

### Internal Pathways

<p>Indicate whether the pathways connecting the entrance to the beach are flat or with ramps in addition to those already described</p>	<p>Obstacle-free paths</p>
	

### Toilet and shower accessible to guests with reduced mobility

<p>Number <b>of toilets</b> accessible/usable by guests with reduced mobility</p>	<p>1</p>
<p>Access to the premises</p>	<p>via 2 ramps: the first length 126 cm, width 160 cm, gradient 7.3%; second length 80 cm, width 205 cm, slope 9.9%; door knocker step 1.5 cm</p>
<p>Usable width of the entrance door</p>	<p>82 cm</p>
<p>Toilet height</p>	<p>52 cm</p>
<p>Open front toilet seat</p>	<p>NO</p>
<p>Support handles</p>	<p>on both sides</p>
<p>Flexible hand shower at the side of the toilet</p>	<p>NO</p>





Free space on the sides of the toilet	left more than 90 cm right 82 cm frontal more than 90 cm
Electric doorbell/phone	YES
Washbasin with space underneath for wheelchair	64 cm
Height from the ground on the bottom edge of the mirror	127 cm
Baby changing table	YES
	
Accessible <b>shower</b> available for guests with reduced mobility	YES in common with the toilet room
Shower type	open-type
Floor-level shower	YES
Shower chair	missing
Grab bar	YES
Presence of shower head or ups and downs	Sliding rails with lowest point height 140 cm
Electric doorbell/phone	YES

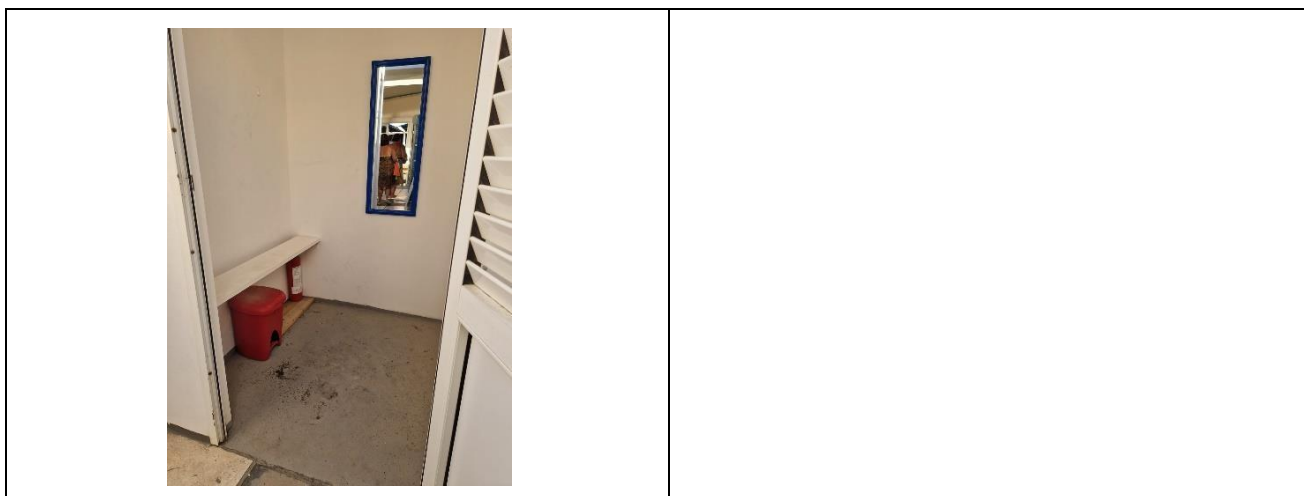




**Changing room**

Accessible changing room available for guests with reduced mobility	YES
Access to the premises	via 2 ramps: the first length 126 cm, width 160 cm, gradient 7.3%; second length 80 cm, width 205 cm, slope 9.9%; door knocker step 1.5 cm
Usable door/entrance width	87 cm
Size of the dressing room	width 140 cm and depth 130cm
Presence of a cot	NO
Coat rack height from the ground	over 140 cm





## Beach

Type of beach	sand
Access to the beach	via 3 ramps: the first is 80 cm long, 205 cm wide, 9.9% slope; the second length 170 cm, width 150 cm, slope 5.7%; third length 40 cm, width 150 cm, slope 14%; step 1 cm
Walkway to reach the umbrellas	YES
Type of walkway	PVC
Walkway width	90 cm





<p>Removable Platform between the walkway and the umbrella station to facilitate the passage and parking wheelchair</p>	<p>YES</p>
<p>Amphibious beach chair available for helping people with reduced mobility to enjoy swimming (owned by the establishment or by association)</p>	<p>YES</p>

### Children's play area

<p>Children's play area</p>	<p>missing</p>
-----------------------------	----------------

### Swimming pool

<p>The property has a swimming pool</p>	<p>NO</p>
---	-----------



Project promoted by



**Regione Toscana**

---

## **Doctors' Offices/Healthcare Facilities**

Hospitals near the facility	Cecina Hospital at 4.9 km; Via Montanara, Cecina
Other Healthcare Facilities	Tourist Medical Guard at 350 m; Viale Galliano, Marina di Cecina

**TESTED BY: Handy Superabile Social Promotion Association in summer 2023**

---

Project carried out with the contribution of the



**Presidenza del  
Consiglio dei Ministri**  
Ministro per la disabilità